

# Illustrative Examples of Potential Adverse Human Rights Impacts Associated with Commodity Trading



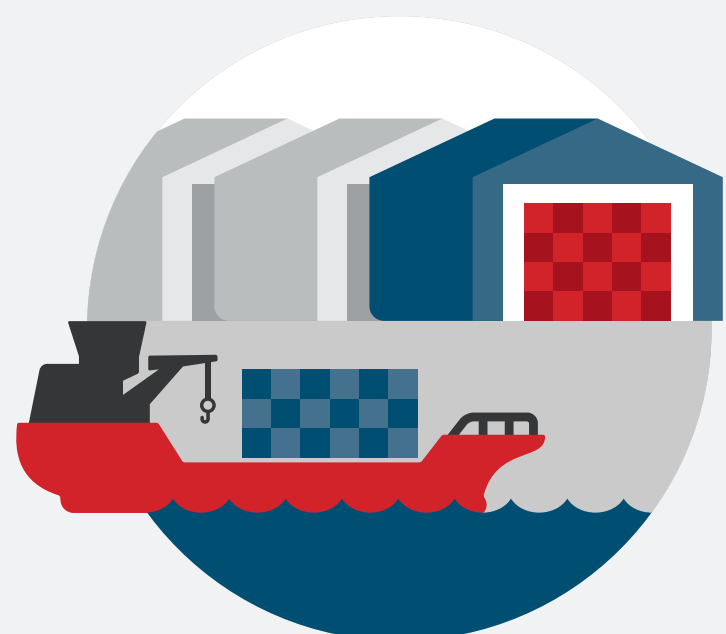
## 1 Buying

**Purchasing commodities from producers with adverse human rights impacts at the point of production or extraction**



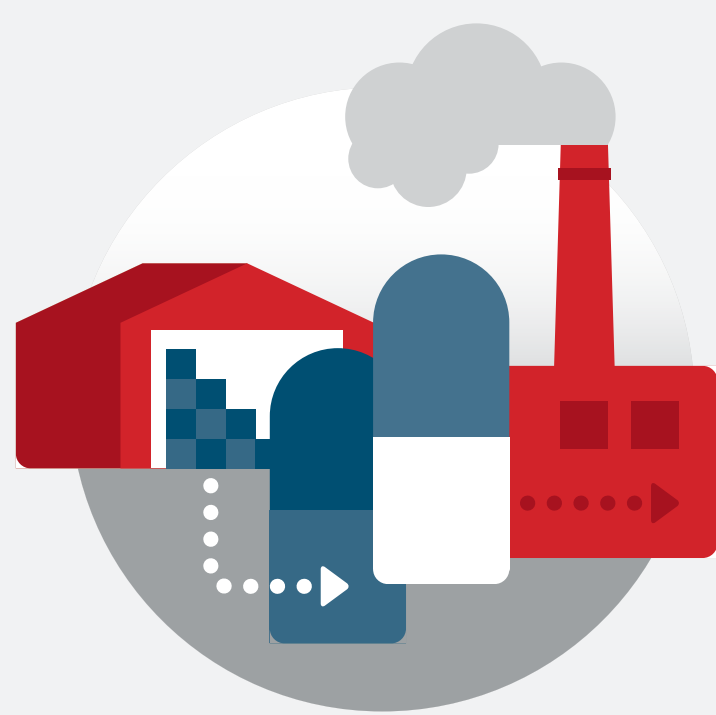
## 2 Transporting

**Impacts associated with moving commodities from one location to another**



## 3 Storing

**Human rights impacts arising from storing commodities**



## 4 Transforming

**Human rights impacts arising from transforming commodities**



## 5 Selling

**Impacts associated with the sale of products whose improper transformation or use is found to contribute to serious health related harms to people**



Unfair working conditions, activities taking place in absence of adequate community consent



Child and forced labour



Health and safety abuses



Discrimination of migrant workers



Resettlement of communities without Free, Prior and Informed Consent (FPIC)



Abuses of public/private security forces infringing workers', indigenous peoples', and communities' rights



Unsafe road transportation



Unfair labour standards (shipping)



Conditions of migrant workers (shipping)



Unsafe working conditions in the vessels (shipping)



Environmental issues - discharge of pollutants and waste (shipping)



Oil contamination of surrounding land, dust emissions from concentrate



Storage compromising clean water and health standards



Activities taking place in absence of adequate community consent, including forced resettlement of communities to build storage facilities



Abuses of public/private security forces infringing workers', indigenous peoples', and communities' rights



Unsafe working conditions in smelters and refineries



Forced resettlement of communities to build transforming facilities



Activities taking place in absence of adequate community consent



Emission of health-damaging pollutants into the air, impacts on water



Impacts associated with the sale of products whose improper transformation or use is found to contribute to serious health-related harms to people, e.g. copper concentrate with a high content of mercury, residues of pesticides in agricultural products